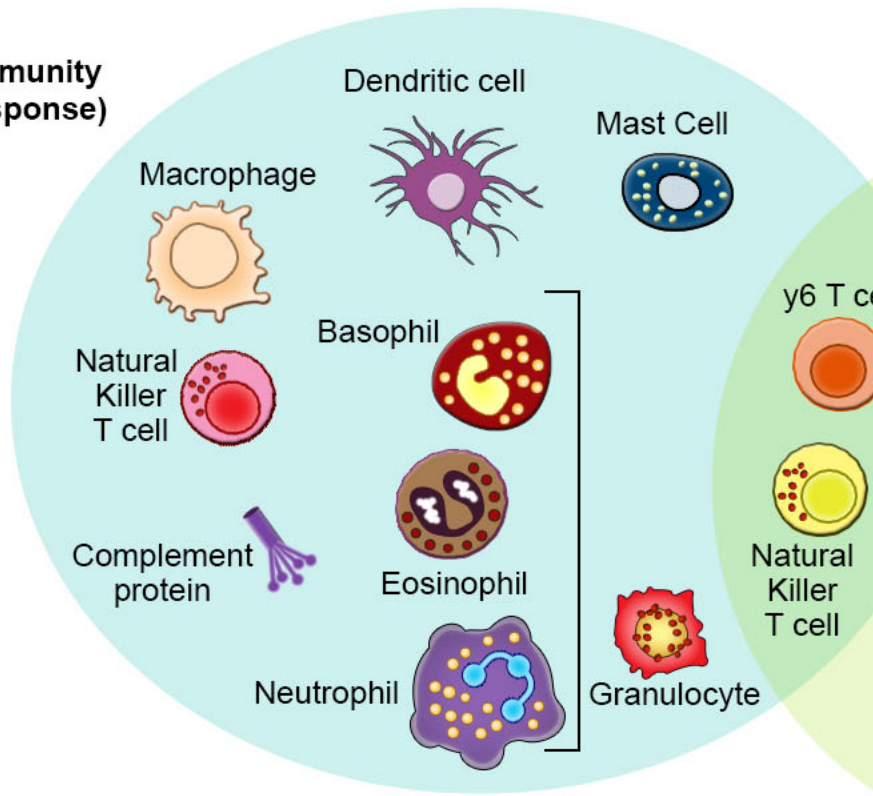
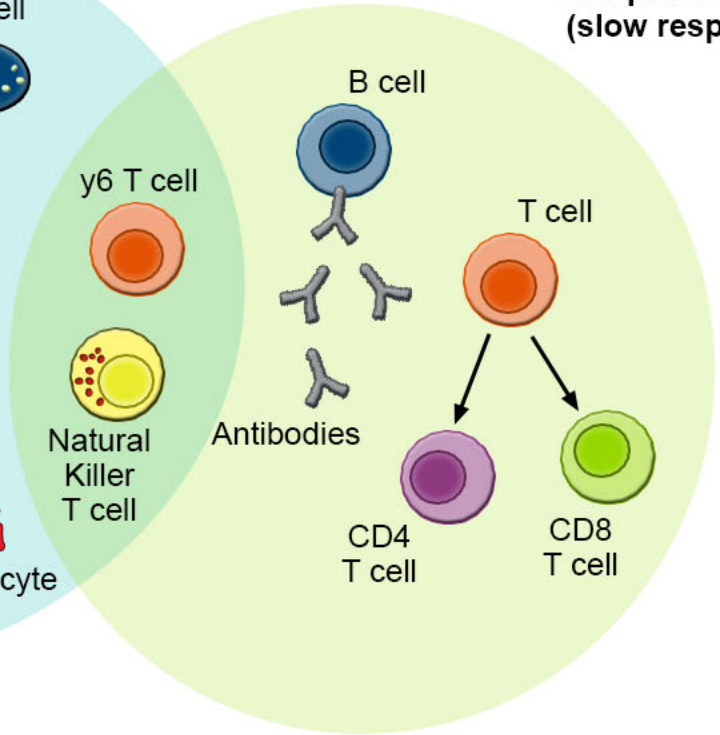
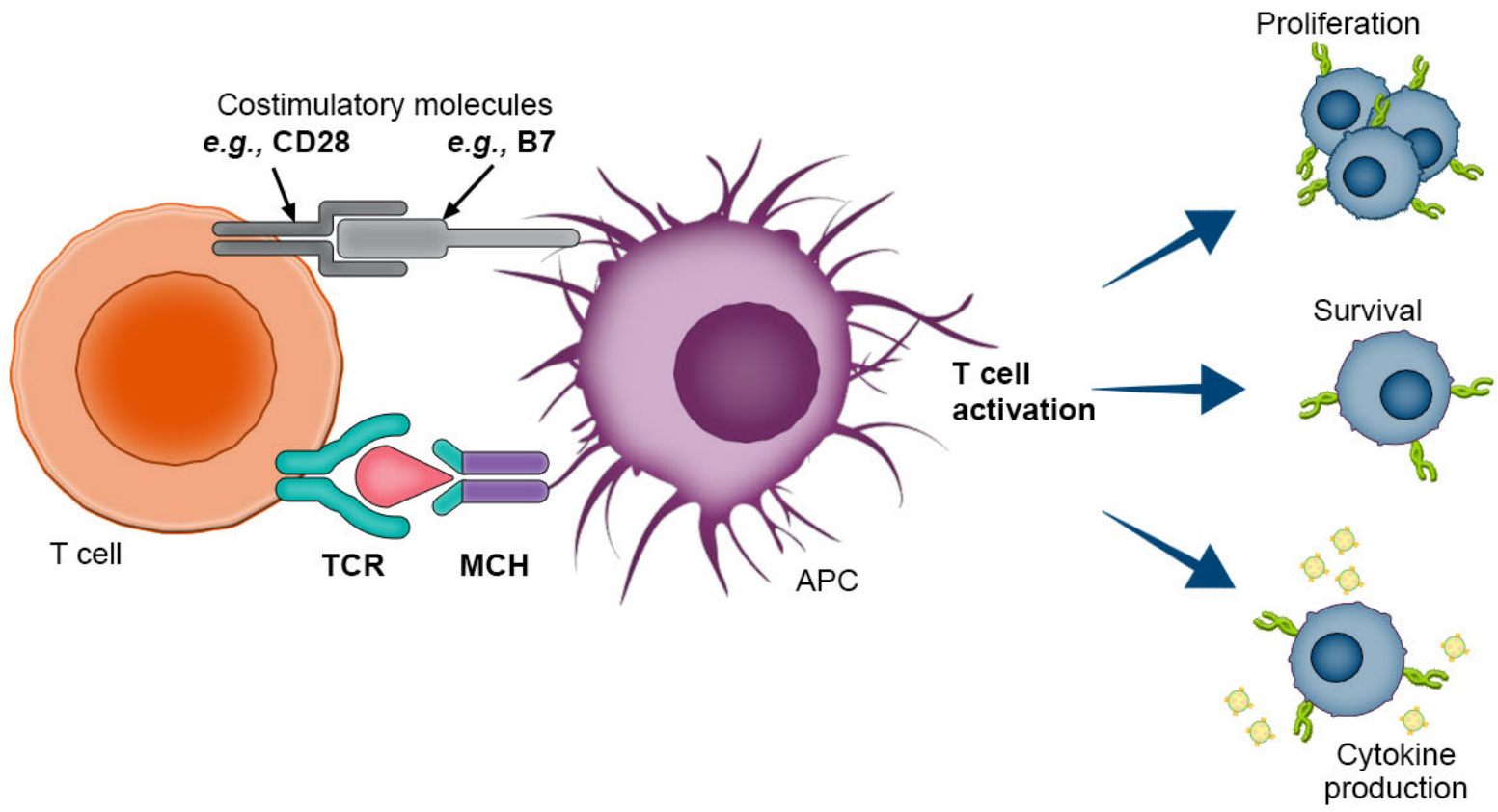


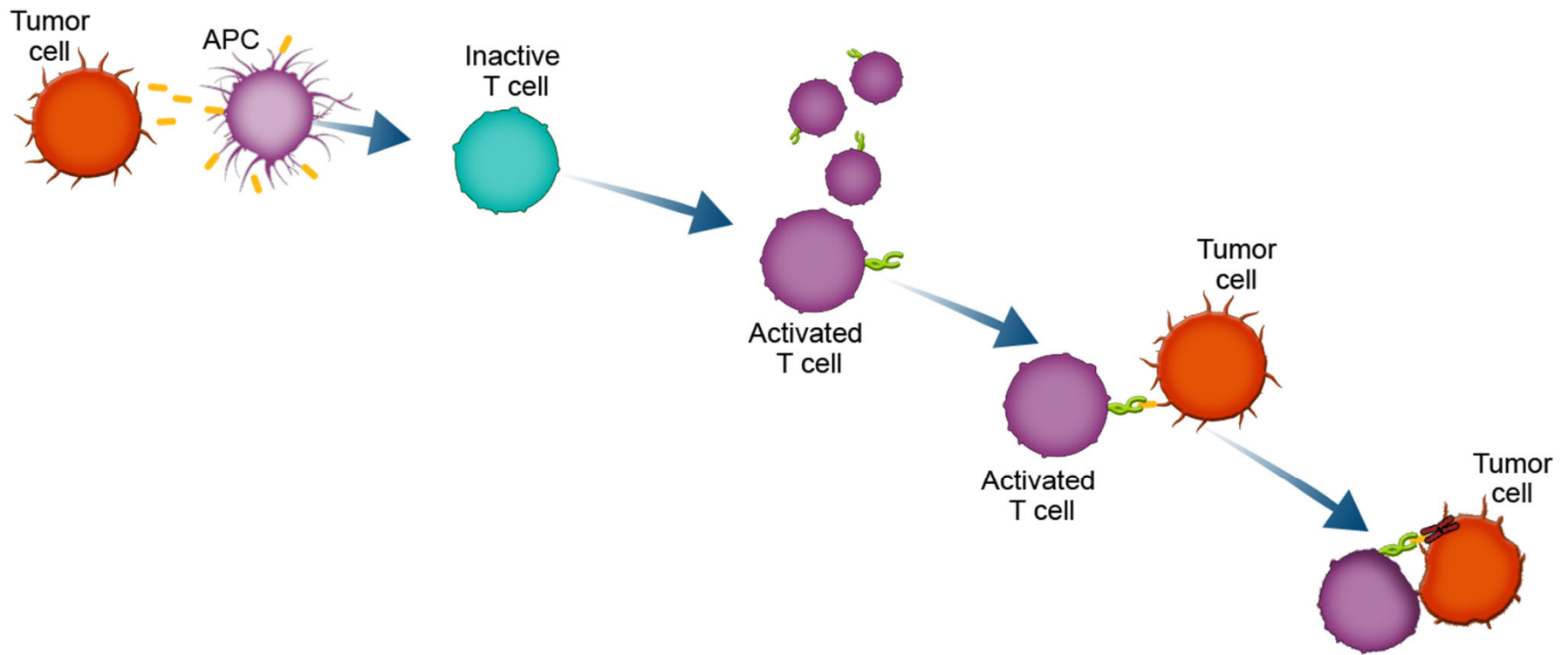
**Innate immunity  
(rapid response)**

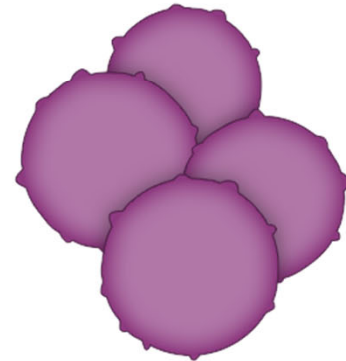
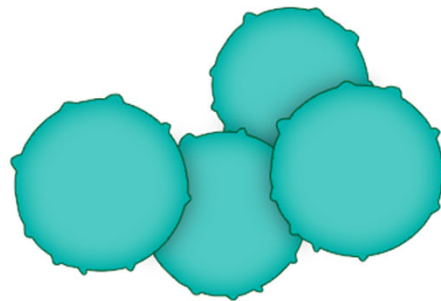
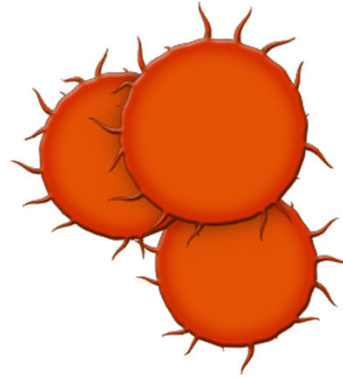
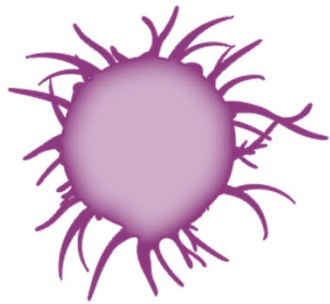


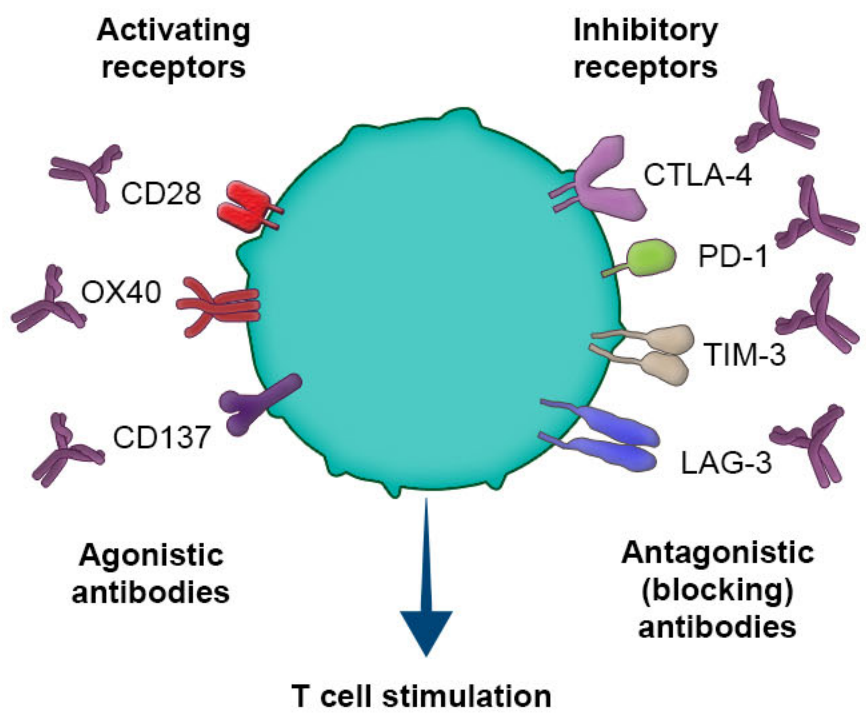
**Adaptive immunity  
(slow response)**







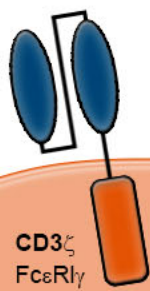




First Generation

Second Generation

Third Generation



4-1BB  
(Tisagenlecleucel)



CD28  
(Axicabtagene  
ciloleucel)



Cytotoxicity  
Proliferation  
Persistence

+

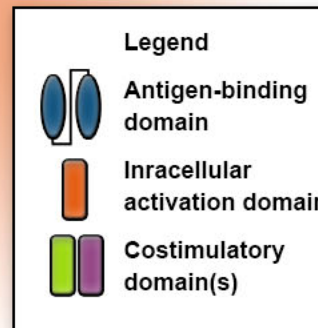
++

++

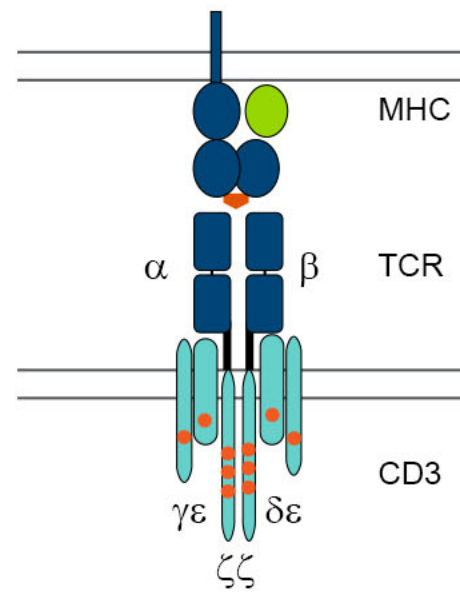
+

++

+



# Modified T Cell Receptor (TCR)



# CAR vs. TCR : Antigen Recognition

